



## CAPITOL PROFESSIONAL ACADEMY

### REVITMEP

Capitol Professional Academy  
Give Wings to Your Career



Technical Training  
Recruitment  
Engineering & Consulting  
Constructions

Capitol Professional Academy, an institution dedicated for providing advanced level of training to vibrant enthusiasts who seek careers in the industry and corporate. The professional courses offered by Capitol Professional's Academy is specially designed on Industry basis to acquire technical knowledge and skills in order to seek career position in corporate and industries. CPA trained individuals are qualified for positions in constructional projects, petrochemical plants, telecom sector, utilities, fabrication designing, software, networking, Industries which work on industrial automation based turnkey projects, maintenance and other occupations that require automation skills.



CAPITOL PROFESSIONAL ACADEMY  
TRIVANDRUM

Mobile: +91-8606158987  
EMAIL: info@capitolglobal.com

[www.capitolglobal.com](http://www.capitolglobal.com)

# DIPLOMA IN ELECTRICAL CONSTRUCTION ENGINEERING

## INDUSTRY FOCUSING

- ✦ Construction & Infrastructure
- ✦ Facility Management
- ✦ Oil and Gas Industry
- ✦ Telecom companies
- ✦ Military services
- ✦ IT and networking
- ✦ Utilities
- ✦ Hospitality Industry
- ✦ Airports / Aviation field
- ✦ Sea ports / Shipyards
- ✦ Medical services
- ✦ Transportation fields

## Flexible solutions for Industry need

In this fast moving construction nature, most of our companies are hiring for trained professionals around the globe than non-trained professionals. Around 40% of the total project value belongs to MEP department that's brings an importance of this course.

Autodesk certifications provide reliable validation of knowledge and skills. Autodesk REVIT is the popular Building Information Modeling (BIM) software widely used to create effective design of a building including its components and sub-assemblies. The user of Autodesk REVIT largely comprises of engineers and architects enabling them to create 3D design structures and handling database techniques to access the structural information. On the other hand REVIT MEP is a matured application reaching masses within the engineering and building design field. Typically REVIT MEP is a streamlined for MEP trades and processes

## COURSE DETAILS

Batch :	Full Time	Part Time
Duration :	1 Months	2 Months
Qualification :	M.TECH / B.TECH / DIPLOMA (EEE/AE/ECE/ME)	



## DESIGNING

Methods and techniques for the design of Electrical Construction using design tools (Tools used: **AUTO CADD, REVIT**).



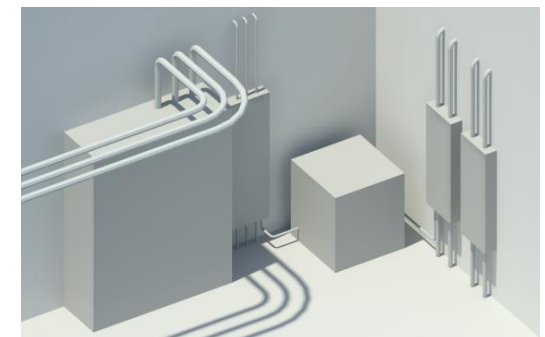
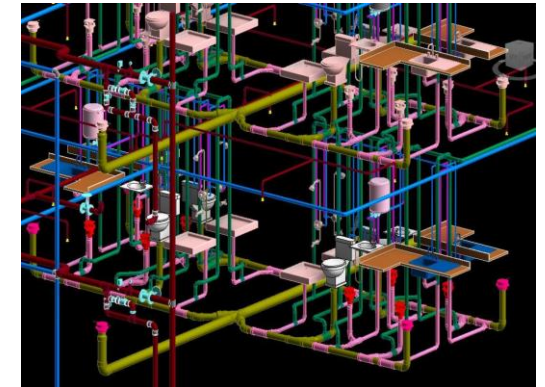
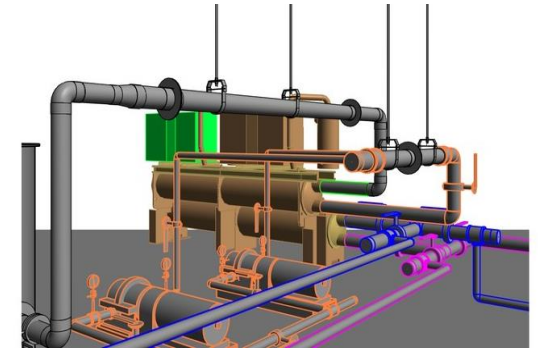
WE ARE LOOKING FOR ENTHUSIASTIC GRADUATES WILL YOU BE THE RIGHT ONE?

[WWW.CAPITOLGLOBAL.COM](http://WWW.CAPITOLGLOBAL.COM)



# DIPLOMA IN ELECTRICAL CONSTRUCTION ENGINEERING

- Fixtures, placing switches, junction boxes, and receptacles, creating lighting circuits with wire, creating lighting circuits
- Without wire, creating a switch system, creating power loads, balancing wire size and breaker service, creating a panel
- Schedule, checking your design, creating a electrical system.
- Configuring a plumbing and piping system
- Adding sanitary plumbing fixtures, creating a sanitary system, adding sinks to the sanitary
- System, refining the sanitary stack, creating the cold water system, creating the hot water system, creating a plumbing systems
- Specifying pipe settings, determining zone requirements, creating a sprinkler design Schedule.
- Adding sprinklers, creating a piping system, completing the fire protection wet system
- Adding vertical supply piping, modifying pipe diameters, documenting a project
- Duplicating plan views, creating dependent views, creating a plumbing isometric riser, creating callout views.
- Creating annotations, creating dimensions, creating a legend.
- Creating a model-based electrical riser diagram detail, creating detail wiring, creating a model-based
- Isometric detail, drafting detail components, importing and exporting a cad drawing



WE ARE LOOKING FOR ENTHUSIASTIC GRADUATES. WILL YOU BE THE RIGHT ONE?

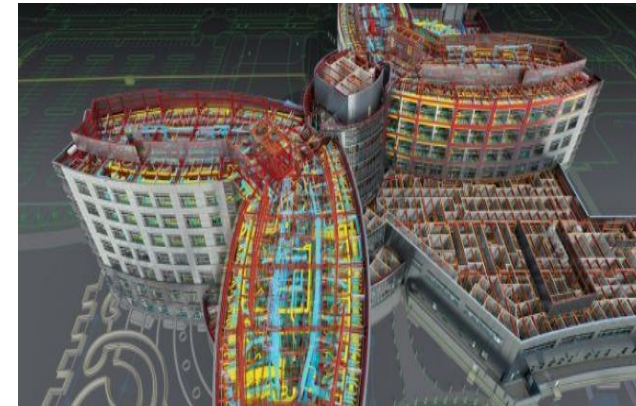


[WWW.CAPITOLGLOBAL.COM](http://WWW.CAPITOLGLOBAL.COM)

# DIPLOMA IN ELECTRICAL CONSTRUCTION ENGINEERING

## NAVISWORKS:

- NAVISWORKS files formats, opening and appending files in NAVISWORK, saving files, merging projects, refreshing and Deleting file, publishing files, navigation tools, selecting objects
- Hiding object, object properties, moving object, selection set, viewpoints, redline tools, recording animations, sectioning the Model, adding links, comparing models and switchback.
- Conducting a clash test, clash test rules, clash test results, clash test reports, import and export clash tests
- Walking, orbit, look, gravity, cube, view point, styles, background, sectioning.



WE ARE LOOKING FOR ENTHUSIASTIC GRADUATES. WILL YOU BE THE RIGHT ONE?

[WWW.CAPITOLGLOBAL.COM](http://WWW.CAPITOLGLOBAL.COM)